



**CHAWLA NURSING HOME
&
MATERNITY HOSPITAL**

**Infertility
Treatments**



INDICATIONS

ICSI is indicated for treatment of male factor infertility and selected types of female infertility, such as some morphologic anomalies of oocytes, limited quantities of oocytes, and anomalies of the zona pellucid. It is used in couples with previous poor fertilization or previous failed IVF cycles. ICSI is indicated for male factor infertility when success with standard IVF regimens is considered unlikely because of :

- **Less than 2 million motile spermatozoa per ejaculate**
 - **Antisperm antibodies thought to be causing infertility**
 - **Prior or repeated fertilization failure with standard IVF protocols**
 - **Frozen sperm limited in number and quality**
 - **Obstruction of the male reproductive tract not amenable to repair**
 - **Abnormal sperm morphology greater than 95 percent**
 - **Specific spermatozoa defects impairing spermatozoa-oocyte interaction**
- ICSI has also been successful in men with nonmosaic Klinefelter syndrome or long-standing azoospermia after chemotherapy; in these cases, spermatozoa are obtained from testicular biopsies. Other potential indications for ICSI include:
- **HIV discordant couples**
 - **IVF involving, in vitro matured oocytes, or previously cryopreserved oocyte**

Centre For

- ❖ Bariatric Surgery
(Weight Loss Surgery)
- ❖ General Surgery
- ❖ Hysteroscopy
- ❖ Laparoscopy
- ❖ Painless Delivery
- ❖ Pediatrics
- ❖ Urogynaecology
- ❖ IVF-ICSI (Test Tube Baby Center)
- ❖ Breast & Gynae Cancer Surgery



CHAWLA NURSING HOME & MATERNITY HOSPITAL

9, Lajpat Nagar, Link Road, Jalandhar 144 001 (Punjab) INDIA

Ph : 0181 5272323, 2224374

Fax : 0181 2236662, Cell : 73071-03001

www.chawlanursinghome.com, www.chawlanursinghome.in

Intra Uterine Insemination (IUI)

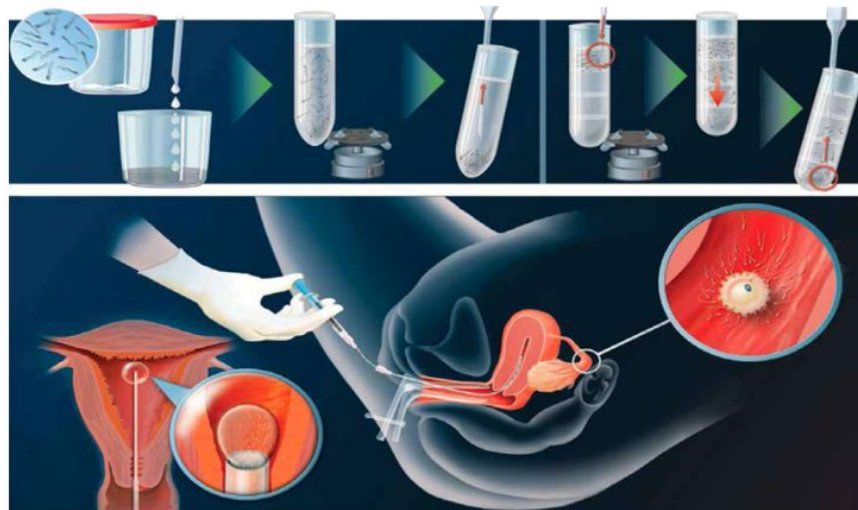
Intra Uterine Insemination is a type of artificial insemination; it is a procedure for treating infertility. Sperms that have been washed and concentrated are placed in uterus around the time ovary releases one or more eggs to be fertilized.

INDICATIONS FOR IUI:

- Lack of Conception after women has been on ovulation enhancing agents
- Unexplained infertility
- Endometriosis – related infertility
- Mild male factor infertility
 - **Oligospermia, Asthenospermia, Oligoasthenozoospermia & Decreased normal sperm morphology**
- Male ejaculatory dysfunction
- Cervical factor infertility
- Semen allergy
- Donor sperm

Insemination is a reasonable Initial treatment that should be utilized for a maximum of about 3 months in women who are ovulating (releasing eggs) on their own.

IUI PROCEDURE

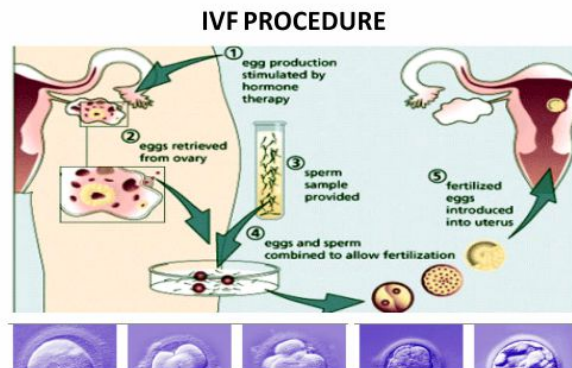


In-Vitro Fertilization (IVF)

In vitro fertilization (IVF) refers to a procedure designed to overcome infertility and produce a pregnancy as a direct result of the intervention. In general, the ovaries are stimulated by a combination of fertility medications and then one or more oocyte(s) are aspirated from ovarian follicles. These are fertilized in the laboratory ("in vitro"), after which, one or more embryo (s) are transferred into the uterine cavity. A complete infertility evaluation is performed on both partners prior to embarking on IVF.

INDICATIONS FOR IVF :

- Tubal factor (IVF is primary therapy if tubes are completely blocked)
- Male factor infertility
- Diminished ovarian reserve (time to conception is critical and success with other therapies is low)
- Ovulatory dysfunction, endometriosis, unexplained infertility & Ovarian failure
- Uterine factor



Intra Cytoplasmic Sperm Injection (ICSI)

Intracytoplasmic sperm injection (ICSI) refers to a technique in which a single sperm is injected directly into the cytoplasm of a mature oocyte. This procedure is performed as part of an in vitro fertilization (IVF) cycle, and provides an effective method for assisting fertilization in men with suboptimal semen parameters or who experienced no or low fertilization rates after conventional IVF.

